

PUTAWAY WITH VOXWARE VMS STREAMLINE YOUR WORKFLOW, OPTIMIZE YOUR SPACE

You don't want newly received products to sit in the receiving area where they are in your operation's way. Voxware VMS Putaway helps you get them into storage locations accurately and fast.

Warehouse velocity begins with receiving products accurately and putting them away quickly. You want to keep received merchandise at the truck bays for a minimum amount of time, and keep the goods-in area as clear as possible. Once received, products need to be put away quickly and accurately.

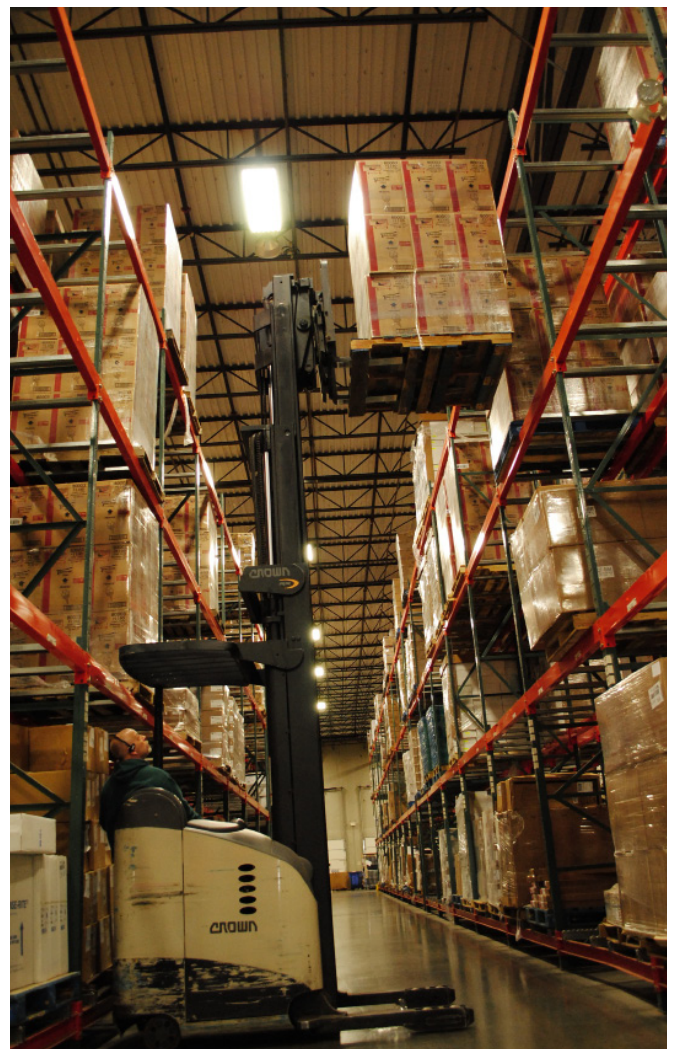
Voxware VMS Putaway brings the power of voice to the putaway process. It is the first step in a "wall-to-wall voice" application strategy for the warehouse.

Voxware VMS Putaway has options that give you control of the putaway business process. Workers identify pallets for putaway, and either the system will direct them to the putaway location, or they can select a location and then tell the system where are products have been put away.

Additional validation of products can be done using various identifiers, such as UPC codes or lot numbers, to ensure that the products are tracked within the warehouse. Goods can be put away into one or more storage locations as needed.

Workers can batch multiple pallets and put them away simultaneously in a single trip. Partial put to multiple locations is also supported, as is a two-step putaway process in which one worker moves a pallet to an intermediate area where another worker picks it up and puts the product away to the storage location.

Mangers can dictate put locations from the



Key Features

- Worker-driven pallet identification
- Integrated scanning for pallet identification
- Additional product verification by voice to capture UPC code, lot number, or other identifier
- System-directed putaway location
- User-directed putaway location
- Manager-designated putaway location via VoxConsole
- Two-step putaway process support
- Batched putaway of multiple pallets in a single trip
- Partial put to multiple locations
- Multi-level dialog strategies for extreme accuracy and high productivity
- Personal performance enhancers specific to individual workers

Voxware VMS VoxConsole. With the power and flexibility of Voxware VMS Putaway and its sister Voxware 3 applications, products move through the warehouse with high velocity and full traceability.

Enterprise Voice Architecture

While companies that use voice in the warehouse report positive benefits, research confirms that users of proprietary voice systems are not always happy. These users are frustrated by a high-cost infrastructure and the expenses associated with making changes to their voice systems.

Voxware solved those problems through an important yet often unseen innovation: the Enterprise Voice Architecture (EVA). The software foundation for the Voxware Voice Management Suite, EVA makes every Voxware solution portable across diverse hardware devices, operating systems, DBMS, and web servers.

Part of the architecture is our Enterprise Voice Manager, which controls voice operations across multiple warehouses. The manager follows our commitment to Universal Configurability, enabling virtually any voice business process to be configured, not coded.

We invest in innovation, regardless of how flashy or outwardly obvious it is. But when our product delivers long term cost control and operational agility, it becomes clear that our software is built for best in class business over the long haul.